

**AREA: HAWORTH**

<b>Site count</b>	<b>Capacity Overview</b>	<b>Headline Analysis</b>	<b>Detailed Tables</b>
-------------------	--------------------------	--------------------------	------------------------

<b>ALL SITES</b>		<b>SITES WITHIN TRAJECTORY (DELIVERABLE OR DEVELOPABLE)</b>	
Total No Of Sites	<b>16</b>	No of Green Field Sites	<b>10</b>
Total Area (Ha)	<b>30.52</b>	No Of PDL Sites	<b>2</b>
RUDP Phase 1 Housing Sites	<b>1</b>	Mixed PDL / Green Field	<b>1</b>
RUDP Phase 2 Housing Sites			
Sites with Outline / Full pp for Housing	<b>2</b>	Wholly / mainly within flood zone 2	<b>1</b>
Suitable Now	<b>7</b>	Wholly / mainly within flood zone 3a	<b>1</b>
Potentially Suitable (Policy Constraints)	<b>8</b>	Wholly / mainly within flood zone 3b	
Potentially Suitable (Physical Constraints)		Within / partly within green belt	<b>3</b>
Unsuitable	<b>1</b>	Within / partly within local wildlife designations	
		Within partly within local green space designations	<b>5</b>

<b>DWELLING CAPACITY (Based on Median of Upper and Lower)</b>							
	No Of Sites	Hectares	Short	Medium	Long	Total	% of District Total
	<b>13</b>	<b>26.29</b>	<b>254.5</b>	<b>527.5</b>	<b>71</b>	<b>853</b>	<b>2.3%</b>

**HEADLINES / MAIN POINTS**

Haworth has a mixed supply of future housing opportunities, the majority on land within the urban area. Half the sites considered deliverable in the short term period are Greenfield sites, but are on land either unallocated in the RUDP or identified as housing sites in the RUDP, but as yet undelivered. The Safeguarded Land site has been ruled out as unachievable on the basis of the number of protected trees on the site and part of it falling within a wildlife area.

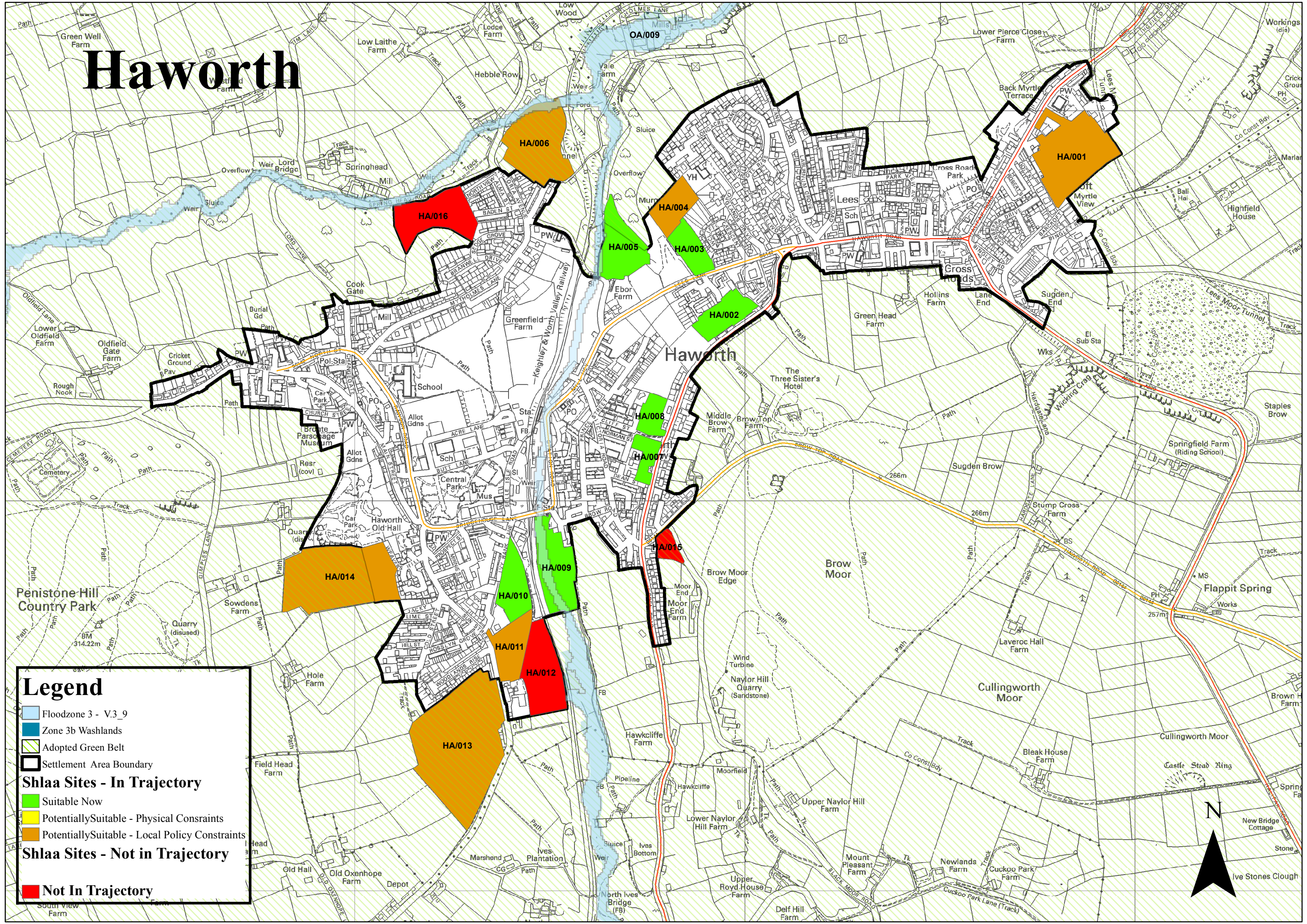
Spread of housing across the area is uneven with limited number in the long term period and if it comes forward should be spread evenly across the trajectory.

	‘Deliverable Sites’			‘Developable Sites’								
	SHORT TERM Years 1-6			MEDIUM TERM Years 7-12			LONG TERM Years 13-17			TOTAL		
	Lower Forecast	Upper Forecast	Mid Point	Lower Forecast	Upper Forecast	Mid Point	Lower Forecast	Upper Forecast	Mid Point	Lower Forecast	Upper Forecast	Mid Point
<b>Haworth Trajectory Total</b>	228	281	254.5	431	624	527.5	61	81	71	720	986	853
<b>Green Field</b>	85	99	92	385	513	504.5	61	81	71	531	693	612
<b>Mixed</b>	43	52	47.5	46	111	78.5				89	163	126
<b>PDL</b>	100	130	115							100	130	115
<b>PDL Consolidated*</b>	121.5	156	138.75	23	55.5	39.25				144.5	211.5	178
<b>PDL %</b>	53.3	55.5	54.5	5.3	8.9	7.4				20.1	21.5	20.9
<b>Haworth Residual</b>										0	0	0
<b>Residual – Mixed</b>												
<b>Residual PDL</b>												
<b>Haworth Capacity Total</b>										720	986	853

	No of Sites	Hectares	Dwellings
<b>Suitable Now</b>	7	7.77	355.5
<b>Potentially Suitable – Policy Constraints</b>	6	18.52	497.5
<b>Potentially Suitable – Physical Constraints</b>			
<b>Unsuitable Sites</b>	1	0.37	

		SHORT TERM			MEDIUM TERM			LONG TERM			TOTAL		
		Lower Forecast	Upper Forecast	Mid Point	Lower Forecast	Upper Forecast	Mid Point	Lower Forecast	Upper Forecast	Mid Point	Lower Forecast	Upper Forecast	Mid Point
<b>Haworth Trajectory Total</b>		228	281	254.5	431	624	527.5	61	81	71	720	986	853
	<b>Suitable Now</b>	228	281	254.5	66	136	101				294	417	355.5
	<b>Potentially Suitable (Policy Constraints)</b>				365	488	426.5	61	81	71	426	569	497.5
	<b>Green Belt</b>				235	314	274.5	61	81	71	296	395	345.5
	<b>Other</b>				130	174	152				130	174	152
	<b>Potentially Suitable (Physical Constraints)</b>												
<b>Residual Supply*</b>													
<b>Haworth Residual Supply Total</b>													
	<b>Potentially Suitable (Policy Constraints)</b>												
	<b>Green Belt</b>												
	<b>Other</b>												
	<b>Potentially Suitable (Physical Constraints)</b>												
<b>Haworth Capacity Total</b>											720	986	853

# Haworth



**Legend**

- Floodzone 3 - V3\_9
- Zone 3b Washlands
- Adopted Green Belt
- Settlement Area Boundary

**Shlaa Sites - In Trajectory**

- Suitable Now
- Potentially Suitable - Physical Constraints
- Potentially Suitable - Local Policy Constraints

**Shlaa Sites - Not in Trajectory**

- Not In Trajectory

